

Why conflicts over land?

Land is central to social power and belonging, human (re-)production, political control, environmental systems and cultural representation. Its uses, distribution and representation are changing over time. These changes are contested and can, but do not necessarily, lead to conflict.



What is GLOCON?

GLOCON is a junior research group with post-doctoral and doctoral researchers, student assistants and a project coordinator. Based at the Otto Suhr Institute of Political Science and the Institute of Latin American Studies of the Freie Universität Berlin, GLOCON combines disciplinary knowledge (political science) with area studies (Latin American and African studies).



SPONSORED BY THE



Federal Ministry
of Education
and Research

Contact:

Dr. Kristina Dietz and
Prof. Dr. Bettina Engels (Joint heads)

Freie Universität Berlin
Boltzmannstr. 1
D-14195 Berlin

Phone: +49 30 838-62783
Fax: +49 30 838-462783

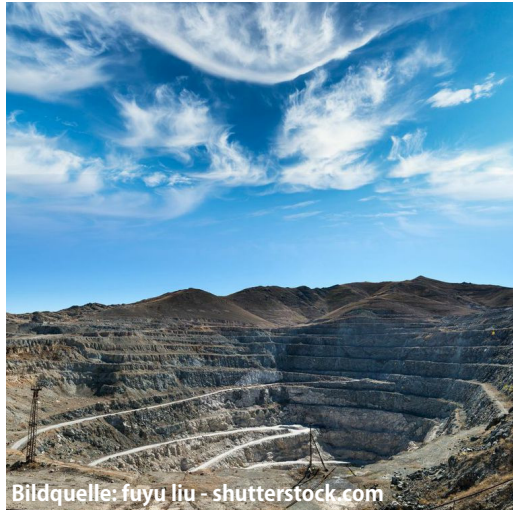
www.land-conflicts.net

GLOCON
Global Change - Local Conflicts

Global Change - Local Conflicts?

**Conflicts over land in Latin America
and sub-Saharan Africa in times of
global transformation**





Bildquelle: fuyu liu - shutterstock.com

GLOCON

is a junior research group studying the relations between global transformation, land use change and social conflict in two world regions: Latin America and sub-Saharan Africa.

GLOCON's aim

is to trace and understand the relations between land use change and social conflicts and to formulate empirically founded statements about how these relations are shaped.

GLOCON's focus

is conflicts over land related to transformation processes such as the valorisation of land, land-related resources, minerals and metals.

GLOCON's research questions

How are processes of land use change and social conflicts interrelated?

What mediating factors shape these relations and produce specific conflict dynamics?

What are the starting-points for political intervention aiming at a constructive transformation of land conflicts?

Methodology

GLOCON's methodology is based on a case study approach and a comparative design. Comparing different cases (land conflicts) in Latin America and sub-Saharan Africa we examine differences and commonalities within and between countries and world regions.

